



High School Course Catalog 2024-2025

Educating the total student – spiritually, intellectually, and physically – in a caring, Christian family community.

2024-2025 COURSE CATALOG

GRADES 9-12

CONTENTS	
WELCOME	2
PROFILE	2
MISSION	3
PURPOSE AND CORE VALUES	4
ADMINISTRATION AND STAFF	5
TEACHING FACULTY	6
ADMISSION AND REGISTRATION	8
TECHNOLOGY REQUIREMENTS	8
GRADUATION REQUIREMENTS	9
COURSE REQUIREMENTS BY GRADE	10
COURSES	12
BUSINESS AND LIFE	
ENGLISH	
FINE ARTS - MUSIC	
FINE ARTS - VISUAL	
MATHEMATICS	
PHYSICAL EDUCATION	
RELIGION	
SCIENCE	
S.T.E.M.	
SOCIAL STUDIES	
WORLD LANGUAGES	
SPECIAL COURSES	
CO-CURRICULAR ACTIVITIES	43
SERVICE OPPORTUNITIES	44

WELCOME


Welcome to St. Croix Lutheran Academy!

I am so glad you are part of the SCLA family. As you prepare for high school, you probably have a lot of questions. What is SCLA like? What classes should I take? What kinds of activities are offered?

This catalog answers these and many other questions. Take a few minutes to find out about the Christian education SCLA offers, and you will see that you have made an excellent choice.

If you have more questions or need assistance, please contact me at (651) 455-1521 or NKallies@StCroixLutheran.org.

Blessings,



Nate Kallies
Principal

PROFILE

St. Croix Lutheran Academy is a private Christian school that welcomes grade 6-12 students from all backgrounds since 1958. The culturally diverse community includes 500 students from the greater Twin Cities metropolitan area, across the United States, and to date, from over 40 countries across five continents.

- Fully-accredited secondary educational institution, Minnesota Nonpublic School Accrediting Association (MNSAA)
- Member of the Association of Lutheran High Schools and the Minnesota Independent School Forum MISF)

Over 70% of SCLA's highly qualified faculty hold advanced degrees in their field.

The student to faculty ratio is 13 to 1, and the average class size is 20.

SCLA students consistently score above the Minnesota state average on the ACT and SAT college placement exams.

95% of SCLA graduates continue their education with post-secondary studies.

MISSION

Since SCLA opened in 1958, the mission has remained central in the approach to education. SCLA is fully committed to educating the total student – spiritually, intellectually, and physically – in a caring, Christian family community.

St. Croix Lutheran Academy offers a college-preparatory curriculum during a two-semester school year. Students take core classes to meet graduation requirements and participate in a variety of electives. Advanced Placement (AP) classes are offered in calculus (AB and BC), English, physics, history, music theory, and psychology. Students can also earn college credits through online courses and STEM programs. Additionally, SCLA participates in the state-sponsored Post-Secondary Enrollment Option (PSEO), which allows qualifying juniors and seniors to take classes at the college level for both high school and college credit.

SCLA is a member of the Minnesota High School League (MSHSL) and Skyline Conference, which includes area public, private, and parochial schools. About 75% of students participate in at least one of nearly 50 co-curricular activities including: baseball, basketball, bowling, clay target, cross country, dance, esports, football, golf, hockey, lacrosse, math team, one-act play, robotics, drone racing, soccer, softball, speech, tennis, track, volleyball, and wrestling. The athletic complex includes one of the best tracks in the metro area, a football field, soccer fields, baseball and softball diamonds, tennis courts, as well as a gymnasium and weight room.

In 2020, a new front entrance with updated security and a fine arts addition including new band, choral, and practice rooms were completed. The fine arts improvements also included doubling the size and updating the visual arts room. The SCLA auditorium was renovated in 2022. A new practice gym and other school facility and programming improvements are in the planning stages.

A Christian education at SCLA includes daily chapel, volunteer service opportunities, religion classes, and Christian values integrated in all aspects of school life. SCLA alumni demonstrate in their choices that the value of a SCLA education lasts a lifetime.

Educating the total student

- spiritually, intellectually, and physically -
- in a caring, Christian family community

PURPOSE

St. Croix Lutheran Academy is a Christ-centered educational ministry sharing God's love with all students. This is accomplished by pointing students to the truths of God's word in the Bible, by helping students strengthen their relationship with their Savior Jesus, and by sharing the good news of his love for all with those who do not yet know him as their personal Savior.

CORE VALUES

Biblical World View	We believe that the Bible is God's unchanging truth, the foundation for all learning and life, and the message of God's saving grace for all.
College Preparation	We challenge and support students and staff to develop and utilize their God-given gifts in order to become productive leaders in the school, church, and local/international community.
Excellence	We pursue excellence in all aspects of Christian education - academics, athletics, and the arts - to the glory of God.
Global	We embrace the culturally diverse backgrounds, perspectives, and gifts of individuals to enrich excellence and to enable one's personal ministry.
Student Focused	We recognize all students are unique, and we strive to put their needs first, as we help them develop spiritually, academically, physically, socially, and emotionally.

ADMINISTRATION AND STAFF

The SCLA team shares a commitment to value each student, to assist them in planning their education, to support them in their work, to be responsive to their needs, and to celebrate with them the successes they will have.

Administration

Brian Shult, Executive Director
Nate Kallies, Principal
Bradley Essig, MS Director
Dr. Ryan Rathje, Academic Dean
Adam Frey, Dean of Students

Activities

Phil Bunkowske, Director
Austin Eisenmann, MS Director
Rachel Grev, Athletics Assistant

Admissions

Anna Biedenbender, Domestic Counselor
Hannah Pankratz, Assistant
Hannah Schmiede, Director of Intl. Admissions and Programs
Christine Wolfrath, Intl. Assistant
Kristin Lehmann, International Counselor

Building and Grounds

Curt Richter, Director
Steve Frenz, Maintenance
Aaron Odegard, Maintenance
Jim Julian, Maintenance
Curt Montgomery, Maintenance
Rachael Wollersheim, Maintenance
Allen Wright, Maintenance

Communications

Kristina Lewerenz, Director
Lisa Streckert, Assistant

Dormitory

Garrett Schoch, Director
Tamara Julian, Student Advisor

Finance

Glenn Will, Business Manager
Lori Kowitz, Operations Manager

Food Service

Pioneer Food Services

Guidance

Rev. David Huebner, Director
Rev. Dustin Sievert, Ministry
Amanda Tess, Assistant/Records
Tammy Sloane-Kloss, Attendance

Marketing

Kris Marshall, Director

Mission Advancement

Carmen Thomforde
Heidi Karbon, Gala Coordinator

Nurse

Joey Nilan, ISD 197

Office Support

Kris Marshall, Process Improvement Manager
Amanda Tess, Assistant to the Principal
Lisa Streckert, MS Admin. Assistant
Naomi Johnston, Receptionist

Registrar

Amanda Tess, International
Dave Tess, Information Specialist

Technology

Brad Holum, IT Specialist

TEACHING FACULTY

Dates in parentheses indicate start year at SCLA.

Anna Biedenbender (2020)

B.A. Art;

M.F.A. Visual Art with emphasis in
Painting and Drawing

Rebecca Hillstrom (2000)

B.A., Psychology, Family Studies;

M.A., Counseling and
Psychological Services

Lucas Boehm (2001)

B.A. Education,

M.A. Coaching & Athletic Admin.

Jonathan Huebner (2017)

B.S. Education and Secondary Math

M.Ed. in Mathematics

James Brohn (2024)

Mark Kaiser (2017)

B.S. Education

Phil Bunkowske (2021)

B.S. Education;

M.A. Sports Administration

M.A. History with emphasis in
Education

Tony Drkula (2014)

B.S. Education;

M.S. Educational Leadership

Nate Kallies (2017)

B.S. Education;

M.Ed. Leadership

Austin Eisenmann (2021)

B.S. Education with Math Minor

Drew Kock (2015)

B.S. Education

M.Ed., Counseling and Development

Kayla Eisenmann (2021)

B.S. Education, Elementary and
Secondary Communication Arts and
Literature

Kristin Lehmann (2017)

B.S. Psychology

M.A. Chinese Studies

Rev. Jonathan Enter (2018)

B.A.;

M.Div.

Ryan Maertz (2022)

B.S., Education, Life Science and
Chemistry

Bradley Essig (2021)

B.S. Education

Christopher Maki (2012)

B.S. Education

M.Ed., Counseling and Development

John Fenske (2013)

B.S. Music Education

M.M.Ed. Band

Rebecca Maki (2013)

B.A. Education

M.A. Teaching English to Speakers
of Other Languages

Adam Frey (2019)

B.S. Education;

M.A. Kinesiology

April Marquardt (2017)

B.A. Elementary Education

Rachel Grev (1999)

B.S. Education,

M.Ed. Teaching and Learning

Mike Marquardt (2017)

B.S. Elementary Education

M.C.M. Choral

Cory Olson (2013)
B.S. Education
Secondary Ed Certification

Heidi Paulsen (2023)
B.S. Teaching, Mathematics

Ellen Pieper (1979)
B.S. Physical Education

Abby Plocher (2021)
B.S. Education, Communication Arts
and Literature

Gabe Plocher (2021)
B.S. Education, Secondary
Mathematics

Dr. Ryan Rathje (2017)
B.S. Education
M.Ed. Professional Development
Ed.D. in Curriculum, Instruction, and
Assessment

Sara Rieke (2022)
B.M.Ed, Choral and Instrumental Music

Sarah Sauer (2010)
B.S. Education
M.A. Teaching of Languages

Brent Schacht (1992)
B.S. Education
M.A. Education

Calla Schoch (2022)
B.S. Education

Garrett Schoch (2022)
B.S. Education, Secondary
Mathematics, Elementary

Karen Scislow (2019)
A.A., B.A. in Art Education

Rev. Dustin Sievert (2016)
B.A.;
M.Div.

Leanne Stob (2000)
B.S. Math and Physics;
M.Ed. Teaching & Curriculum
M.S. Physics

David Tess (2015)
B.S. Education
M.A. Educational Policy, Leadership
M.S. Computer Science

Tim Weddle (2022)
B.S. Education, Communication Arts,
and Literature

Abby Zuberbier (2024)

ADMISSION AND REGISTRATION

St. Croix Lutheran Academy admits students of any race, color, national and ethnic origin to all the rights, privileges, programs, and activities generally accorded or made available to students at the school. It does not discriminate on the basis of race, color, national and ethnic origin in its administration of its educational policies; admissions policies; scholarship and loan programs; or athletic and other school-administered programs.

Families interested in enrolling at St. Croix Lutheran Academy's high school should call the school office to make an appointment with the principal. At the time of registration, students will need to provide the following:

1. A transcript of grades for all grade school years. Students applying for admission for grades 10,11, or 12 should provide a transcript including all credits earned to the point of transferring to SCLA.
2. A school health record and a physical exam form, which is available from the current school's principal or current high school. In keeping with MSHSL guidelines, students participating in any sport must have a physical exam before practice for the sport begins. Physicals are current for three years from the date of the exam.
3. If requested, a letter of recommendation from either the school principal or pastor.
4. A nonrefundable application fee.

TECHNOLOGY REQUIREMENTS

All grade 9-12 students are required to bring a learning device for use in the classroom. Examples of devices that students may bring include Chromebooks, Ultrabooks, Macbook Air, laptops, and tablets. Any manufacturer is acceptable provided the device matches the specs below. Based on experience, we do not recommend tablets for classroom use.

Required specifications for an acceptable device:

- Screen size minimum of 7" measured diagonally
- Battery life for the entire school day (minimum of 5 hours). Charging of devices is not allowed during class time.
- WiFi capability

Recommendations

- A Chromebook is designed as an educational tool that is lightweight, optimized for Google School usage, and is affordable. It meets all the educational needs for the student.
- For protection, SCLA recommends students have a carrying case with a keyboard for all tablets.

GRADUATION REQUIREMENTS

A student must be a full-time student in each semester to graduate. One full credit is given for successful completion of each class that meets daily for both semesters.

4 years of English	3 years of Math
3 years of Science	3 years of Social Studies
1 year of Physical Education	1 year of Fine Arts
Each Semester - Religion	.5 year of Health

Science credits must include Biology, Physics or Chemistry and one elective.

	MN State U's	U of MN	U of WI	MLC	WLC
English	4 years	4 years	4 years	4 years	4 years
Math	3 years	4 years	4 years	3 years	4 years
Science	3 years	3 years	3 years	3 years	3 years
Social Studies	3 years	3 years	3 years	2 years	3 years
World Languages	2 years	2 years	3 years	2 years	3 years
World Culture or Fine Arts	1 year	1 year	2 years		1 year

TWO SEMESTER SYSTEM

The St. Croix Lutheran Academy school year runs from late August to June and is divided into two semesters. Courses are organized according to a semester system. All students are expected to carry a full course load each year.

GRADING

Grades are available online at any time throughout the semester. These grades are not final, but indicate a student's progress to that point. Final grades are assigned for all credit courses at the end of each semester.

NCAA COURSES

NCAA schools require college-bound student-athletes to build a foundation of high school courses to prepare them for the academic expectations in college. Not all high school classes count as NCAA core courses. Only certain classes in English, math (Algebra 2 or higher), science, social studies, & world language are approved as NCAA core courses. SCLA classes that are NCAA core courses are marked in the catalog with an NCAA icon. Please see the Academic Dean or Athletic Director for more information.

COURSE REQUIREMENTS AND ELECTIVES BY GRADE

Courses marked with an asterisk (*) are required by the State of Minnesota. An additional 1/2 credit in Physical Education is required before graduation.

NOTE: Elective offerings may change based on enrollment and teacher availability.

GRADE 9 - FRESHMEN

Required Courses:

- English* (ESL or various courses)
- Mathematics*
- Biology*
- Physical Education* (1 semester)
- Bible Class
- Health* (1 semester)

Elective Courses:

- Chorale
- Symphonic Band
- Fundamentals of Art
- Fundamentals of Drawing
- STEM Intro to Computer Science
- STEM Engineering Essentials
- World Geography
- German 1
- Mandarin Chinese 1/2/3
- Spanish 1/2/3

GRADE 10 - SOPHOMORES

Required Courses:

- English* (ESL or various courses)
- Mathematics*
- Science*
- World History/Geography*
- Bible Class

Elective Courses:

All previous plus

- Yearbook
- Concert Choir
- Drawing 1
- Sculpture 1
- Ceramics 1
- Body Shop
- Fit for Life
- American Sign Language 1
- American Sign Language 2
- German 2
- Spanish 4
- Earth Science
- Chemistry
- Physics
- AP Physics 1
- STEM Computer Science Principles
- STEM Principles of Engineering

GRADE 11 - JUNIORS

Required Courses:

- English* (ESL or various courses)
- U.S. History*
- Mathematics*
- Science*
- Bible Class

Elective Courses:

All previous plus

- Applied Technologies
- Business, Entrepreneurship, and Personal Finance
- Basic Foods
- Child Development
- AP English Language & Comp.
- Drawing 2
- Sculpture 2
- Ceramics 2
- Digital Media Arts
- AP Precalculus
- AP Calculus AB/BC
- AP Chemistry
- AP Physics 2
- STEM Cybersecurity
- STEM Dual Credit Computer Science
- AP Psychology
- AP U.S. History
- Anatomy and Physiology
- Spanish 5
- Online College Credit Courses
- PSEO

GRADE 12 - SENIORS

Required Courses:

- English* (ESL or various courses) or AP English Literature
- Economics* (1 semester)
- Government* (1 semester)
- Bible Class

Elective Courses:

All previous.

BUSINESS AND LIFE SKILLS DEPARTMENT FLOWCHART

Desktop Publishing / Yearbook

10th, 11th, 12th

Prereq: World Lit &
Intermediate Grammar

Basic Foods

11th and 12th

Child Development

11th and 12th

Business, Entrepreneurship, and Personal Finance

11th and 12th

Applied Technologies

11th and 12th

** Foods and Child Development are semester based courses*

BASIC FOODS

Students discover the basics of food preparation and nutrition through hands-on activities, from boiling water to preparing an entire meal for the class.

Prerequisite: Grade 11 or 12

Additional \$100 fee (to cover consumables).

One semester

BUSINESS, ENTREPRENEURSHIP, & PERSONAL FINANCE

This course is designed to empower students with knowledge and application of basic financial principles so they can make sound financial decisions for life and in business. It also examines the critical issues affecting entrepreneurship and small business management.

Prerequisite: Grade 11 or 12; priority will be given to grade 12 students

Two semesters

CHILD DEVELOPMENT

Students explore the first six years of life, with an emphasis on emotional, social, physical, intellectual, and moral development.

Utilizes project-based learning and sensory techniques.

Prerequisite: Grade 11 or 12

One semester

YEARBOOK

Designed to offer sophomores, juniors, and seniors the opportunity to produce The Shield, SCLA's yearbook. Through the use of Jostens' Yearbook Avenue Online program, students become familiar with desktop publishing, especially in the areas of layout design and caption writing. This course is graded as pass/fail.

Prerequisite: World Literature and Intermediate Grammar

Two semesters

APPLIED TECHNOLOGIES

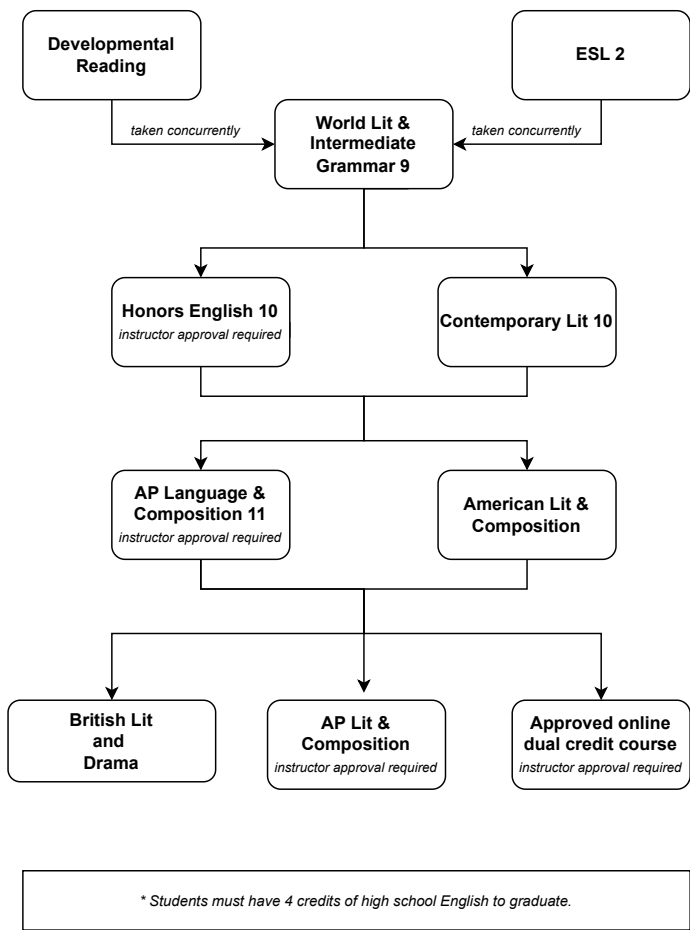
Provides hands-on learning in basic woods and modern woodworking; CAD design; introduction to laser and CNC use; and small engine systems and maintenance.

Prerequisite: Grade 11 or 12

Additional \$100 fee (to cover consumables).

Two semesters

ENGLISH DEPARTMENT FLOWCHART



DEVELOPMENTAL READING

This literacy intervention course reinforces fundamental reading skills.

Emphasis is on sentence writing proficiency, comprehension, and fluency. Students will grow in confidence while being accelerated toward grade-level proficiency. This course is typically taken concurrent with a student's grade level language arts course.

Prerequisite: Recommendation of elementary or middle school principal; standardized test scores.

Two semesters

WORLD LITERATURE, INTERMEDIATE GRAMMAR & COMPOSITION

NCAA

This course will provide students with the necessary tools to evaluate a variety of literature from around the world in the light of God's word and to organize their thoughts and express themselves with the purpose to persuade.

Prerequisite: Recommendation of elementary school or middle school principal; standardized test scores.

Two semesters

CONTEMPORARY LITERATURE & GRAMMAR

NCAA

This course will provide students with the necessary tools to evaluate a variety of 20th and 21st century literature in the light of God's word and to both write and speak with the purpose of sharing information in an organized and thoughtful way.

Prerequisite: Recommendation of elementary school or middle school principal; standardized test scores or World Literature, Intermediate Grammar & Composition

Two semesters

HONORS ENGLISH 10

NCAA

This course prepares students to analyze a variety of fiction and nonfiction literary works according to Biblical principles and expands the students' rhetoric and persuasion skills in both writing and speaking.

Prerequisite: World Literature, Intermediate Grammar & Composition

Two Semesters

AMERICAN LITERATURE & COMPOSITION

NCAA

This course places an emphasis on writing effectively and improving composition for various purposes as students survey the genres of American Literature.

Prerequisite: Contemporary Literature & Grammar, Honors English 10, or instructor's approval

Two semesters

AP ENGLISH LANGUAGE & COMPOSITION**NCA**

AP English Language and Composition cultivates the reading and writing skills that students need for college success and for intellectually responsible civic engagement. This course aligns to an introductory college-level rhetoric and writing curriculum that allows students to evaluate, synthesize, and cite research from non-fiction texts as they strive to develop evidence-based analytic and argumentative essays.

Prerequisite: B average or better in Contemporary Literature & Grammar or Honors English 10 (with instructor approval)

Two semesters

BRITISH LITERATURE AND DRAMA**NCA**

In the first semester, this course samples a wide variety of prose and poetry from British literature, taking into consideration historical perspectives. In the second semester, dramas from throughout time and across the world are studied thematically. Each semester, students write research papers and create speeches with the goal of teaching their classmates.

Prerequisite: American Literature and Composition or AP Language

Two semesters

AP ENGLISH LITERATURE AND COMPOSITION**NCA**

This course prepares students to take the College Board

Advanced Placement Exam in English Literature and Composition. It covers a wide range of prose, poetry, and drama, and features regular practice in both the essay and multiple-choice sections of the AP test.

Prerequisite: B average or better in American Literature & Composition or AP Language & Composition

Two semesters

ESL 1: LANGUAGE ARTS

Students are provided with support to read, write, speak, and listen in English mainstream courses. Special emphasis is put on academic vocabulary and writing.

Prerequisite: ELTiS test scaled score of 194 and below

Two semesters

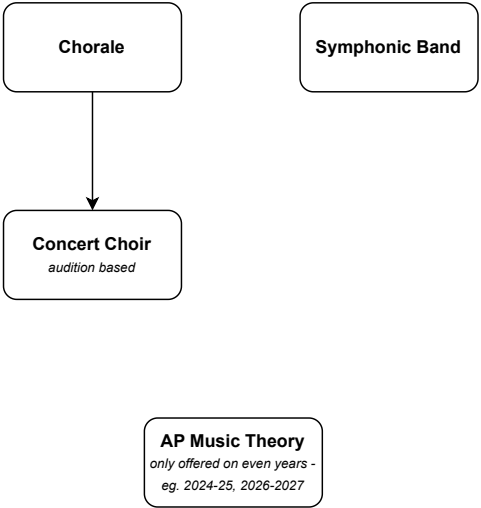
ESL 2: LITERATURE, GRAMMAR & COMPOSITION

Students are provided with support to read, write, speak, and listen in English mainstream courses. Special emphasis is put on academic vocabulary and writing. Class is taken concurrently with World Literature.

Prerequisite: ESL 1 or ELTiS test scaled score of 195-214

Two semesters

MUSIC DEPARTMENT FLOWCHART



* This flowchart is part of the Fine Arts Department. You need 1 fine art credit to graduate.

CHORALE

Chorale is an ensemble that provides intermediate-level choral experience that further explores vocal technique and general musicianship. Mandatory performances include the Fall Concert, Christmas Concert, Sacred Concert, and the Spring Pops Concert. Students are expected to perform short assignments designed to improve their musicianship and critical-thinking skills. This course also provides preparation for auditioning for top-level ensembles like Concert Choir and Croixaliers. This course is graded as pass/fail.

Prerequisite: Grade 10-12

Two Semesters

CONCERT CHOIR

Concert Choir provides choral experience that teaches advanced vocal technique and musicianship through preparation of more challenging choral literature from a variety of styles and backgrounds. This course empowers all participants for a lifetime of music making and also aims to prepare those students seeking to participate at the collegiate level. Mandatory performances include the Fall Concert, Christmas Concert, Sacred Concert, and the Spring Pops Concert. Any current student may sign up for Concert Choir.

- Students not currently enrolled in a choir meet with Mr. Marquardt to demonstrate vocal and music reading ability and pass a short quiz on treble and bass clef notes with 90% accuracy or higher.
- Current Chorale members must pass a Level 2 Sight Singing exercise and pass a treble and bass clef quiz with 90% accuracy or higher.
- Current Concert Choir members – Once they're in, they can stay in it. No further requirement to try out.

Prerequisite: Grade 10-12. Instructor approval.

Two semesters

SYMPHONIC BAND

Symphonic Band is an opportunity for students who have prior experience on a band instrument to develop their skills to a high level. Emphasizes advanced playing techniques, performance, soloistic playing, and expression. The band performs at concerts and worship services at SCLA and may attend various band clinics and festivals. Members may also use their instrumental skills in several extra-curricular groups including: Pep Band, Percussion Ensemble, Brass Choir, Jazz Ensemble, Woodwind Ensemble, or other instrumental groups. Participating in the performances is a requirement for a passing grade. This course is graded as pass/fail.

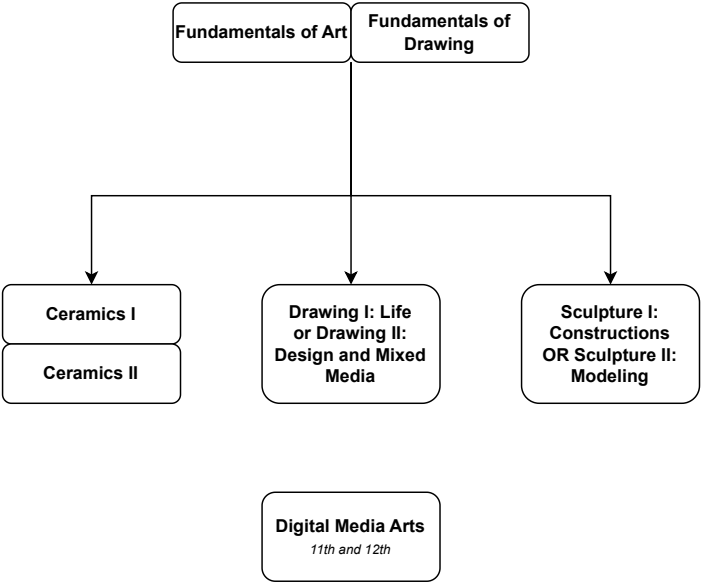
Prerequisite: Prior experience and audition

Two semesters

AP MUSIC THEORY

The course will emphasize melody, harmony, texture, rhythm, meters (simple and complex), form, musical analysis, elementary composition, history, style and musicianship skills, such as listening skills, sight-singing, and keyboard harmony. Enrolled students must have acquired (or are acquiring) at least basic performance skills in voice or on an instrument. The ultimate goal is to develop students' ability to recognize, understand, and describe the basic materials and processes that are heard or presented in a score. Offered in the even years only, e.g., 24-25; 26-27.

ART DEPARTMENT FLOWCHART



** Students must have 1 credit in Fine Arts to graduate*
** All courses in this flowchart are semester based except for Digital Media Arts*

Prerequisite: Approval of Instructor
Two semesters

Fundamental art courses are prerequisites for all art classes.
An exception may be made for Fundamentals of Drawing at the instructor's discretion for students who demonstrate proficient skills.

FUNDAMENTALS OF ART

The understanding and application of the elements and principles of art are the focus of this foundational course. Learning will be based on hands-on projects as well as studying historically significant artists and works in western art history. Other important concepts to be covered include composition, creativity vs. copying, aesthetics and the value of critiques.

Prerequisite: None
One semester

FUNDAMENTALS OF DRAWING

The traditional methods of linear perspective and gridding will be used to develop skills necessary for sighting and drawing from life. The emphasis of this class is on accurate perception and purposeful mark-making.

Prerequisite: None
One semester

DRAWING 1

Drawing 1 will build on the Fundamentals of Drawing course. Students will further explore ways of seeing and accurately representing three dimensional forms and spaces in two dimensions. Students will work from life and observation.

Prerequisite: Fundamentals of Art and Fundamentals of Drawing
One semester

DRAWING 2

Drawing 2 will teach students a design mind set and to understand the importance of the process in creating. Students will use a variety of media to represent not just what they see but what they can imagine. Students will be encouraged to develop ideas. Drawing 1 is strongly recommended.

Prerequisite: Fundamentals of Art and Fundamentals of Drawing
One semester

SCULPTURE 1

The emphasis of this class will be on designing three dimensional forms that can be assembled or constructed. Subjects will include objects that are purely for aesthetics as well as concepts for practical, functional forms.

Prerequisite: Fundamentals of Art and Fundamentals of Drawing
One semester

SCULPTURE 2

Modeling and carving three dimensional forms will be the methods used in this class. Ideas will be developed from paper to the finished form.

Sculpture I is strongly recommended.

Prerequisite: Fundamentals of Art and Fundamentals of Drawing

One semester

CERAMICS 1

Students will be introduced to tools and techniques for working with clay.

Students will use handbuilding methods including pinching, slabbing, and coiling to create a variety of forms.

Prerequisites: Fundamentals of Art

One semester

CERAMICS 2

The emphasis of this class will be upon surface treatment and decoration of forms. Wheel-throwing will also be introduced.

Prerequisites: Ceramics 1

One semester

DIGITAL MEDIA ARTS

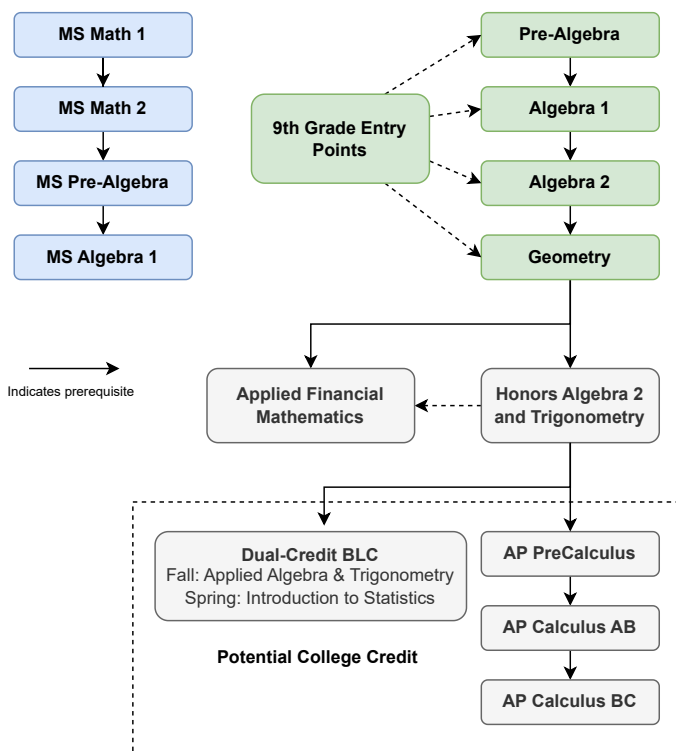
This course will provide students with the opportunity to learn about video editing and creation using Final Cut Pro X, audio editing and creation using GarageBand, visual effects, foley design, podcast creation, music creation, and more. Students will create projects in the previously mentioned areas implementing composition techniques, color theory, and storytelling using media. No previous experience in any related field is required.

Prerequisite: Grade 11 or 12

Two semesters

NOTE: Taking two math courses the same year requires department chair approval.

MATH DEPARTMENT FLOWCHART



* Honors Algebra 2 & Trig and Geometry may be taken concurrently

MATH DEPARTMENT – POSSIBLE SEQUENCES

Grade	General Education	College Preparation		Advanced College Preparation 1		Advanced College Preparation 2	
9	Pre-Algebra Biology	Algebra 1 Biology		Algebra 2 Biology		Geometry Biology	Geometry and Hon. Alg. 2 & Trig. Biology
10	Algebra 1 Earth Science	Algebra 2 Earth Science or Physics		Geometry Chemistry	Geometry and Hon. Alg. 2 & Trig. Any Science	Hon. Alg. 2 & Trig. Any Science	AP PreCalculus Any Science
11	Algebra 2 Physics	Geometry Chemistry	Geometry and Hon. Alg. 2 & Trig. Any Science	Hon. Alg. 2 & Trig. Any Science	AP PreCalculus or *BLC Dual Credit Any Science	AP PreCalculus or *BLC Dual Credit Any Science	AP Calculus AB or *BLC Dual Credit Any Science
12	Geometry Chemistry	Hon. Alg. 2 & Trig. or Applied Financial Math Any Science	AP PreCalculus or *BLC Dual Credit or Applied Financial Math Any Science	AP PreCalculus or *BLC Dual Credit or Applied Financial Math Any Science	AP Calculus AB or *BLC Dual Credit or Applied Financial Math Any Science	AP Calculus AB or *BLC Dual Credit or Applied Financial Math Any Science	AP Calculus BC or *BLC Dual Credit or Applied Financial Math Any Science

*BLC Dual Credit:

- Fall Semester: Math130: Applied Algebra & Trigonometry
- Spring Semester: Math120: Introduction to Statistics

PRE-ALGEBRA

Prepares students for Algebra 1 and reinforces fundamental math skills. Students learn to use variables in formulas, solve equations, solve problems and interpret data. Topics include real numbers, algebraic expressions, equations and inequalities, ratios & proportions & percents, functions and linear representations, systems of equations, geometry, measurement, and probability and statistics.

Prerequisite: None

Two semesters

ALGEBRA 1

Explores mathematical concepts with an emphasis on variables and equations.

These skills are applied to real-life situations as often as possible. Topics include: algebra basics, multi-step equations and inequalities, relations and functions, linear equations, direct and inverse variation, systems of equations and inequalities, exponents and exponential functions, polynomials and factoring, basic quadratic equations, statistics, rational expressions and equations, and radical expressions and equations.

Prerequisite: Pre-Algebra or department approval

Two semesters

ALGEBRA 2

NCAA

Advances topics taught in Algebra 1. Additional study of counting theory, probability, sequences & series, an introduction to analytic geometry, and an introduction to logarithms.

Prerequisite: Algebra 1 or department approval

Two semesters

GEOMETRY

NCAA

Presents plane and solid geometry; triangle congruence and similarity; and the study of the properties of circles through deductive reasoning and problem application. Geometric shapes, their properties and measurements are studied as well as right triangle trigonometry.

Prerequisite: Algebra 2 or department approval; can be taken concurrently with Honors Algebra 2 & Trigonometry

Two semesters

APPLIED FINANCIAL MATHEMATICS

NCAA

Applies content learned in Algebra 1, Algebra 2, and Geometry to real-world financial situations. Topics include discretionary expenses, banking services, consumer credit, automobile ownership, employment basics, income taxes, independent living, the stock market, modeling a business, planning for retirement, and preparing a budget.

Prerequisite: Geometry or department approval

Two semesters

HONORS ALGEBRA 2 & TRIGONOMETRY

NCAA

Advances topics taught in Algebra 2. Additional study of matrices, polynomial functions, rational functions, radical functions, and conic sections. Right triangle trigonometry, Law of Sines, Law of Cosines, and Unit Circle trigonometry are included.

Prerequisite: Geometry or concurrent enrollment in Geometry

Two semesters

AP PRECALCULUS

NCAA

Includes advanced topics in trigonometry, analytical geometry, polynomials, functions, and relations. Students also study complex numbers, vectors, parametric equations, sequences, and series. This class can serve as a launching point into calculus or as a final math course at the high school level.

Prerequisite: Department Approval

Two Semesters

AP CALCULUS AB

NCAA

This Advanced Placement® course is roughly equivalent to a college Calculus I course. Topics include limits and continuity, derivatives, conceptual and analytical applications of derivatives, integration and accumulation of change, differential equations, and applications of integration. The course teaches students to approach calculus concepts when they are represented graphically, numerically, analytically, and verbally, and to make connections between these representations. College credit can be earned through scoring well on the year-end AP Exam.

Prerequisite: PreCalculus and instructor approval

Two semesters

AP CALCULUS BC

NCAA

This Advanced Placement® course is roughly equivalent to both college Calculus I and II. Topics include a review of differential and integral calculus from AP Calculus AB, advanced integration techniques, logistic differential equations, parametric functions, vector-valued functions, polar functions, and infinite series.

Prerequisite: AP Calculus AB and instructor approval

Two semesters

Dual Credit with Bethany Lutheran College

APPLIED ALGEBRA & TRIGONOMETRY (4 CR)

This college-level course is designed to study topics in algebra and trigonometry through the perspective of applications. Concepts studied include polynomial, rational, exponential, logarithmic, and trigonometric functions. Additional topics include right triangle trigonometry, trigonometric identities, and laws of sines and cosines. The course focuses on mastery of critical skills and exposure to new skills necessary for success in subsequent math courses.

Prerequisite: Honors Algebra 2 & Trigonometry + Approval from Academic Dean

One Semester - Fall

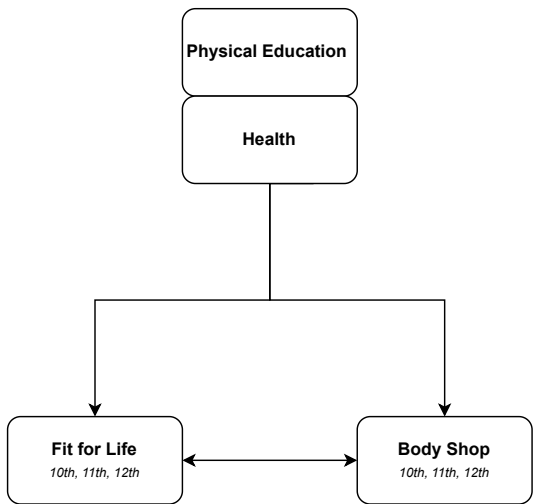
INTRODUCTION TO STATISTICS (3 CR)

In this college-level course, beginning statistical theory and practice are introduced through topics of data collection, sampling techniques, organization and presentation of data, measurement of central tendency, probability concepts, discrete and continuous probability distributions, statistical estimation, hypothesis testing, correlation analysis, linear regression and analysis of variance.

Prerequisite: Honors Algebra 2 & Trigonometry + Approval from Academic Dean

One Semester - Spring

PE DEPARTMENT FLOWCHART



** Body Shop is a full-year course.*

** Students are required to have 1 full credit of high school PE as well as 0.50 credits of Health to graduate.*

** Participation in extracurricular sports during freshman and sophomore years can count toward PE credits for graduation. This can be two different sports over two seasons, or the same sport over both sophomore and junior year. This must be documented and approved before the season.*

NOTE: A second semester of credit may be obtained by participation in two seasons of a SCLA co-curricular sport. See the guidance office for details.

PHYSICAL EDUCATION

This course provides physical activity involving team sports and other activities. This course is graded as pass/fail.

Prerequisite: None

One semester

HEALTH

This course emphasizes physically, mentally, spiritually and emotionally healthy behaviors. (Also offered for ESL students.)

Prerequisite: None

One semester

FIT FOR LIFE

This course teaches participation in classroom (health/fitness strategies and health topics), conditioning (cardio and strength), and lifetime sports in a non-competitive atmosphere. This course is graded as pass/fail.

Prerequisite: Grade 10-12

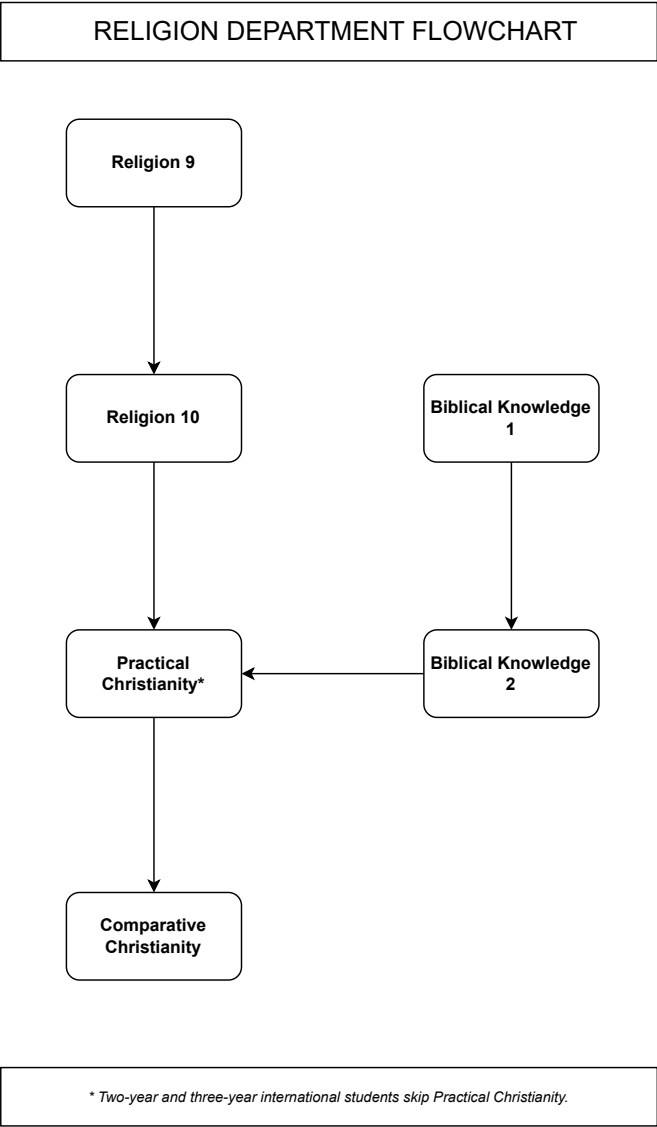
Two semesters

BODY SHOP

This course emphasizes the correct mechanics and movements associated with strength training and fitness training. Goal-setting and daily improvements form the backbone of the training programs, and student progress in strength and fitness is recorded and tracked regularly. This course is graded as pass/fail.

Prerequisite: Grades 10-12

Two semesters



BIBLICAL KNOWLEDGE 1

This course, primarily for international students, will study the basic teachings of the Bible with a focus on God's loving plan to save all people through Jesus and how that becomes personally ours through faith in him.

Prerequisite: None

Two semesters

BIBLICAL KNOWLEDGE 2

This course, primarily for international students, will follow the history of God's saving promise through the Old Testament to its fulfillment in Jesus. It focuses on Jesus' ministry in the Gospels, discusses how that message changes us and equips students to share it with others.

Prerequisite: Biblical Knowledge 1

Two semesters

RELIGION 9

This course covers the Old Testament books of Genesis and Exodus and other practical lessons from Scripture. It focuses on where we came from, how to live, and points to Christ as the one true hope for our eternal future.

Prerequisite: None

Two semesters

RELIGION 10

This course covers biblical history of God preserving his promise of a Savior until its fulfillment in Jesus. First semester focuses on Joshua, Judges, Ruth, Kings and Chronicles. Second semester studies the life, death, and resurrection of Jesus in the four Gospels.

Prerequisite: Religion 9

Two semesters

PRACTICAL CHRISTIANITY

This course emphasizes God's changeless word in a changing world. Students use sections of the New Testament to practically apply God's word to their lives to grow devotionally and prepare intentional lives of service in the home, church, and various cultures.

Prerequisites: Religion 10

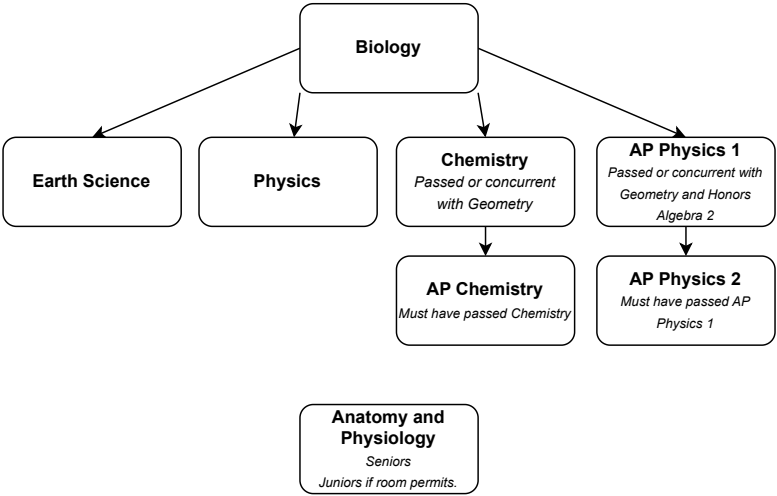
Two semesters

COMPARATIVE CHRISTIANITY

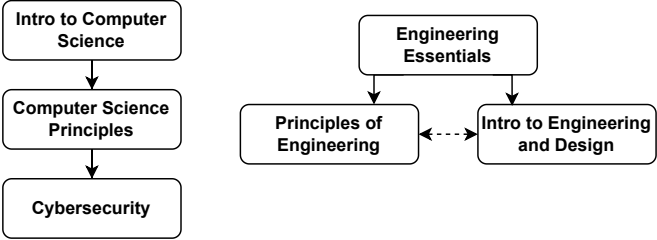
This discussion-oriented class encourages students to share their faith in practical ways with others. Students learn similarities and differences among various Christian denominations and prepare reports about other world religions. Readings include Paul's letters and the book of Revelation.

Prerequisite: Practical Christianity

SCIENCE DEPARTMENT FLOWCHART



STEM FLOWCHART



* Students are required to have 3 credits of high school Science to graduate.
* Required courses include Biology and a Physics or a Chemistry.
* A fee of \$500 is required for first-time STEM enrollment.

Two semesters

BIOLOGY

NCAA

This course exposes students to debates, discussions, and hands-on activities such as projects and dissections to understand the natural world. Topics include genetics, creation, evolution, vertebrates, the human body, ecosystems, viruses, bacteria, and classification.

Prerequisite: None

Two semesters

EARTH SCIENCE

NCAA

This course will cover topics related to the earth and human impact on the environment. Topics include minerals, rocks, volcanoes, earthquakes, earth resources, energy resources, and human impact on resources.

Prerequisite: Biology

Two Semesters

CHEMISTRY

NCAA

Students study the interactions and structure of matter at the atomic level and above. Students learn to conduct experiments; work with the organizational and mathematical tools of chemistry (such as the periodic table and formulas); and communicate chemistry effectively.

Prerequisites: Biology; Passed or concurrently in Geometry.

Two semesters

AP CHEMISTRY

NCAA

This course is designed to be the equivalent of a college-level general chemistry course. Topics include scale, proportion, and quantity application at both the macro- and microscopic scale; structure and properties of atoms and molecules; transformations of matter; and applications of thermodynamics and kinetics. Students will be expected to attend special extended labs that begin at 7:15 a.m.

Prerequisites: **Chemistry and about 10 hours of online summer review work**

Two semesters

PHYSICS

NCAA

This course will briefly cover many topics in physics such as mechanics, dynamics, energy, momentum, electricity, and waves. Labs, hands-on activities, and demonstrations will enhance the inquiry-based format of the class.

Prerequisites: Biology

Two semesters

AP PHYSICS 1

NCAA

This course is designed to replace the first semester of an introductory physics course in college. With a passing grade on the AP test in May, a person may earn credits from the college they wish to attend. The coursework is rigorous and will include mechanics and dynamics of motion, momentum, energy, rotational kinematics and dynamics.

Prerequisite: Biology; Passed or concurrently in Geometry and Honors Algebra 2

Two semesters

AP PHYSICS 2

NCAA

This course is designed to replace the second semester of an introductory physics course in college. With a passing grade on the AP test in May, a person may earn credits from the college they wish to attend. The coursework is rigorous and will include fluid statics and dynamics, thermodynamics, electrostatics, electric circuits, magnetism and electromagnetism, geometric and physics optics, and quantum, atomic and nuclear physics.

Prerequisite: AP Physics 1

Two semesters

ANATOMY AND PHYSIOLOGY

NCAA

This course will enable students to develop an understanding of the structure and function of the human body, its systems, and the relationships among the systems as students seek to understand and appreciate the complexities of the human body designed by our Almighty God. This course will involve projects, activities, diagrams, textbook materials, models, journal writings, and case studies.

Prerequisite: Biology; Seniors (Juniors if there is room)

Two Semesters

ENGINEERING ESSENTIALS (STEM)

Through hands-on projects, students apply the design process and engineering standards, and document their work. Students use industry standard 3D modeling software to help them design solutions to solve proposed problems, document their work using an engineer's notebook, and communicate solutions to peers and members of the professional community.

Prerequisites: Algebra 1 (can be concurrently enrolled)

Additional \$500 fee if first STEM course taken.

Two semesters

PRINCIPLES OF ENGINEERING (STEM)

Through problems that engage and challenge, students explore a broad range of engineering topics, including mechanisms, the strength of structures and materials, and automation. Students develop skills in problem solving, research, and design while learning strategies for design process documentation, collaboration, and presentation.

Prerequisites: Engineering Essentials and instructor approval.

Two semesters

INTRODUCTION TO COMPUTER SCIENCE (STEM)

Students are introduced to the basics of computer science and programming (e.g., data types, logic, algorithms, searching). Societal impacts of computing and technology are also discussed.

Prerequisite: Algebra 1 (can be concurrently enrolled)

Additional \$500 fee if first STEM course taken.

Two Semesters

COMPUTER SCIENCE PRINCIPLES (STEM)

Students transfer knowledge gained in Introduction to Computer Science to a new language: Python. They review CS topics through various activities while automating tasks and finding patterns in data. Students present solutions and weigh the ethical and societal issues of how computing and digital connectivity are changing the world.

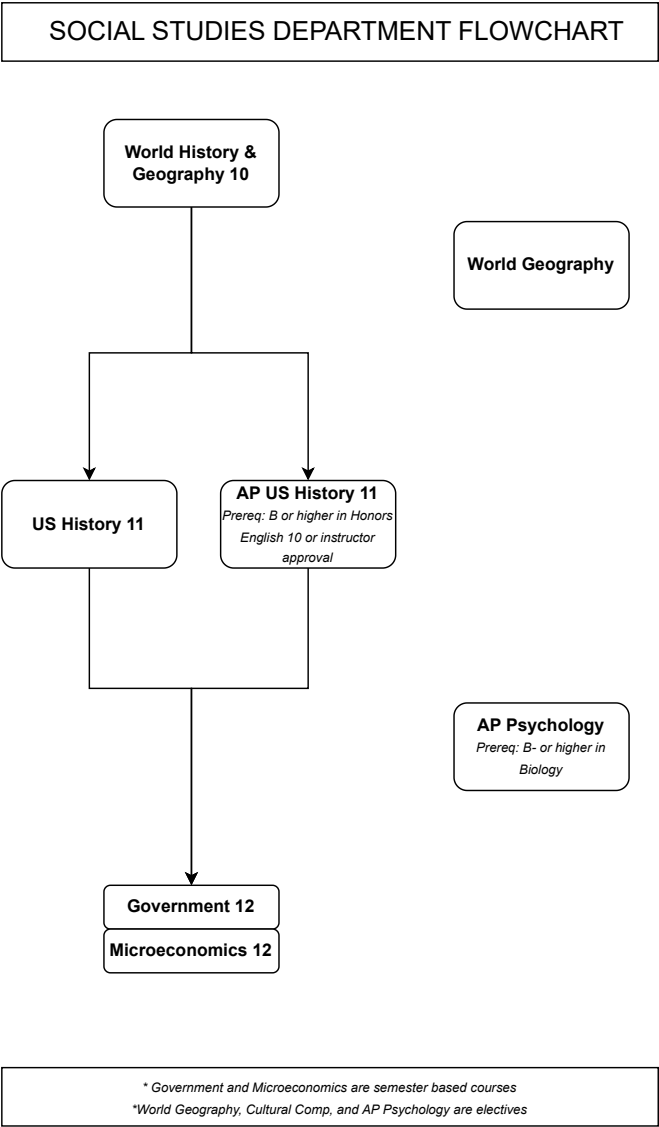
Prerequisites: Introduction to Computer Science and instructor approval

Two semesters

CYBERSECURITY (STEM)

Students learn how to identify cybersecurity threats and protect against them, detecting intrusions and responding to attacks. Personal digital footprints are examined and defense of personal data is also discussed.

Prerequisites: Computer Science Principles and instructor approval



Two semesters

WORLD GEOGRAPHY

NCAA

This course allows students to observe the perspectives, information, concepts, and skills that help them understand their relationship to the earth and the peoples that inhabit it.

Prerequisite: None

Two semesters

WORLD HISTORY/GEOGRAPHY

NCAA

Students learn the physical and political history of the world.

Prerequisite: None

Two semesters

U.S. HISTORY

NCAA

History of the U.S. from pre-colonization to the present.

Prerequisite: World History/Geography

Two semesters

AP U.S. HISTORY

NCAA

A challenging course designed to provide students with the skills and factual knowledge necessary to critically analyze the problems and issues in U.S. History.

Prerequisite: B or better in Honors English 10 or Contemporary Literature & Grammar, and instructor approval

Two Semesters

GOVERNMENT

NCAA

This is a survey course that links the origins of government with our democracy today.

Prerequisite: U.S. History or AP U.S. History

One semester

MICROECONOMICS

NCAA

This course emphasizes the various economic roles we as consumers fill in our society. It also includes an overview of various economies.

Prerequisite: U.S. History or AP U.S. History

One semester

AP PSYCHOLOGY

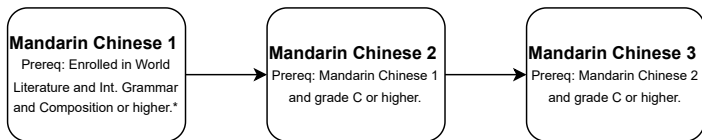
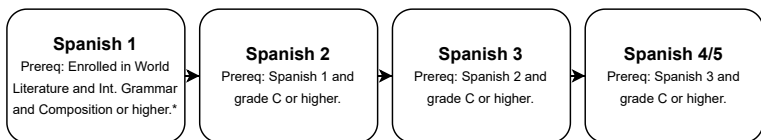
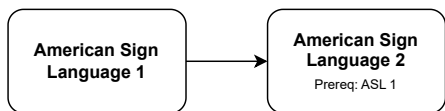
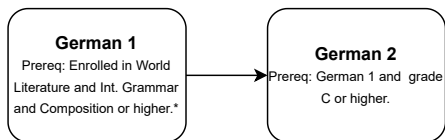
NCAA

This course equals a college-level introductory course and prepares students for the College Board AP exam. Topics: History and schools of psychology; research methods; consciousness; learning and memory; personality disorders and therapy; and social psychology. Students will practice the multiple choice and essay sections of the AP test.

Prerequisites: Grade 11 or 12, instructor approval, B- or better in Health and Biology

Two semesters

WORLD LANGUAGE DEPARTMENT FLOWCHART



** Trial period if enrolled in Contemporary Literature and Grammar*

GERMAN 1**NCAA**

Students learn written and spoken German. Students gain confidence in speaking German through memorizing vocabulary and idioms; studying grammar and syntax; and learning about German culture through videos and MP3s. Not recommended if taking developmental reading or ESL concurrently.

Prerequisite: Enrollment in World Literature and Intermediate Grammar and Composition or higher.

Two semesters

GERMAN 2**NCAA**

Students expand knowledge of German vocabulary, idioms, forms, and syntax; and develop conversations in various social settings, such as school, at home, in restaurants, and other leisure-time activities.

Prerequisite: German 1 - grade of C– or higher

Two semesters

SPANISH 1**NCAA**

Students develop a working vocabulary for a variety of life situations.

Students learn speech patterns through speaking dialogues, composition, reading, and completing several listening labs in which students hear native speakers from many different Spanish-speaking countries. Not recommended if taking developmental reading or ESL concurrently.

Prerequisite: Enrollment in World Literature and Intermediate Grammar & Composition or higher, trial period if enrolled in Contemporary Literature & Grammar (Students who wish to test out of Spanish 1 must take and pass a Spanish standardized test for Level 1.)

Two semesters

SPANISH 2**NCAA**

Students continue to strengthen their skills of listening, reading, writing, and speaking in Spanish. They will also gain a deeper appreciation for the different Spanish-speaking cultures. Emphasis is placed on applying grammar concepts and enhancing oral proficiency through a variety of activities.

Prerequisite: Spanish 1 - grade of C– or higher

Two semesters

SPANISH 3**NCAA**

Students strengthen listening, reading, writing, and speaking skills by expanding vocabulary, applying complex grammar concepts and becoming more confident in conversational skills. Speaking emphasis. Students also explore the cultures of the Spanish-speaking world through a variety of projects.

Prerequisite: Spanish 2 - grade of C– or higher

Two semesters

SPANISH 4/5

NCAA

Students expand knowledge of the language through listening, reading, writing, and speaking skills. In addition to speaking Spanish in class, students read literary selections of well-known Spanish writers as well as current magazine and newspaper articles. Writing and speaking skills are emphasized through essays, short papers, and presentations.

Prerequisite: Spanish 3 - grade of C– or higher

Two semesters

MANDARIN CHINESE 1

NCAA

Students are introduced to the sounds, basic grammar, and vocabulary of Mandarin along with the Chinese writing system. They participate in basic and practical conversation and character recognition in preparation for an optional summer China tour. While being exposed to Chinese history and culture through language study, they gain understanding of the culture and language with the SCLA Chinese student population. Students are paired with a volunteer Chinese International student as a language mentor to work on communication goals and cultural understanding.

Prerequisite: Enrollment in World Literature and Intermediate Grammar and Composition or higher, trial period if enrolled in Contemporary Literature and Grammar

Two semesters

MANDARIN CHINESE 2

NCAA

This course builds on what the students learned in Mandarin 1. It continues to train the students in the four main components of a language: reading, writing, listening, and speaking. The class focuses heavily on spoken communication and preparing students for interacting with native speakers.

Prerequisite: Mandarin Chinese 1 - grade of C– or higher

Two semesters

MANDARIN CHINESE 3

NCAA

This course builds on what the students learned in Mandarin 1 and 2.

It continues to train the students in the four main components of a language: reading, writing, listening, and speaking. The class focuses heavily on spoken communication and preparing students for interacting with native speakers.

Prerequisite: Mandarin Chinese 2 - grade of C– or higher

Two semesters

AMERICAN SIGN LANGUAGE LEVEL 1

A beginning level course that provides the basic foundation of American Sign Language with an overview of Deaf people and their Culture.

ASL is a visual (non-verbal) language that uses hand gestures, facial expressions, conceptual body movements to communicate thoughts, expressions, and ideas. This course will introduce finger-spelling, numbers, alphabet, colors, vocabulary words, and beginning-level conversations in ASL.

Prerequisite: Two-year commitment; must take ASL 2

Two Semesters

AMERICAN SIGN LANGUAGE LEVEL 2

This course builds on basic principles that were learned in American Sign Language 1. ASL is a visual (non-verbal) language that uses hand gestures, facial expressions, conceptual body movements to communicate thoughts, expressions, and ideas.

Prerequisite: American Sign Language 1

Two Semesters

SPECIAL COURSES

LEARNING RESOURCE CENTER (LRC)

The Learning Resource Center seeks to better meet the learning needs of students and their families desiring a Christian education at St. Croix Lutheran. This formal program aids students who have learning needs as well as provide much needed support for their families and teachers. The Learning Resource Center allows for specialized study halls before, during, and after the school day.

DUAL ONLINE CREDIT COURSES

There are a variety of online courses that grant credit for both high school and college available. See the academic dean for details.

POST-SECONDARY ENROLLMENT OPTION (PSEO)

On a limited basis, juniors and seniors may apply for participation in college classes that grant credit for both high school and college. See the

academic dean for details.

CO-CURRICULAR ACTIVITIES

ASSEMBLIES

Throughout the year, individuals and groups come to SCLA to present programs to the student body and faculty that may include music, missionary experiences, and current issues. These assemblies enhance the learning environment with educational and cultural presentations.

ATHLETICS

SCLA is a member of the Skyline Conference, which represents area private, parochial, and public schools. SCLA competes interscholastically in more than 20 athletic activities: baseball, basketball, bowling, clay target, cross country, football, golf, hockey, lacrosse, soccer, softball, girls tennis, track & field, volleyball, and wrestling.

DRAMA

Students may participate in a children's theater production in the fall and a full-length play or musical in the spring.

MATH TEAM

Students may join the math team which participates in the Minnesota State High School League competition.

MUSIC

SCLA offers several musical groups. Students who play the piano often volunteer as accompanists during chapel. The Croixaliers is a select singing group chosen through auditions that perform at school concerts and many off-campus events. Instrumental ensembles including the Oakdale Avenue Jazz band are also organized. The choral and instrumental organizations give a number of concerts throughout the school year and participate in the Minnesota State High School League competition.

ROBOTICS TEAM

The SCL robotics team competes in VEX robotics competitions. High school and middle school students are encouraged to join.

SPEECH TEAM

Open to students in grades 7-12, the speech team develops organizational and oral presentation skills. The season runs from January to April, during which time students prepare speeches in a variety of categories and participate in interscholastic meets. The team also takes part in the Minnesota State High School League competition.

For a complete list visit StCroixLutheran.org/activities

SERVICE OPPORTUNITIES

SCLA encourages all students to act as servant leaders and provides opportunities for them to use their God-given abilities to do so. By serving in this way, students can also earn important volunteer credits which may be useful when completing college applications. Opportunities include:

NATIONAL HONOR SOCIETY (NHS)

Open to students in grades 10-12. Students who have been enrolled for at least one semester and who have a cumulative GPA of at least 3.25 are eligible to become NHS candidates. SCLA faculty make further selections based on the NHS standards of leadership, service, and character.

STUDENT COUNCIL

Membership includes a male and female representative from each class, a president from each class, and four officers (president, vice president, secretary, treasurer). Each class elects its representatives and class president, and the entire student body elects the officers. The council plans school activities, promotes good student-faculty relationships, fosters student leadership, and nurtures a healthy school spirit.

NEW FRIENDS

New Friends buddies meet monthly for two hours in the SCLA gym or at a local park with individuals with special needs. At a New Friends event, young people join together to enjoy various activities like games, music, crafts, and snacks. The focus is on having fun and developing new friendships in a safe, judgment free environment.

AMERICAN MENTOR TO NEW INTERNATIONALS

This important group of select American volunteers donates their talents and a part of their summer. They are the first American students to meet new international students at the beginning of the school year and participate in focused events to ease the transition to American school and social life. Mentors experience the benefits of cross-cultural friendship through fun and personal multi-cultural interactions.

STREAM TEAM

Students interested in the visual arts and broadcasting may serve as camera operators, broadcast associates, and sound/light technicians for various events. The co-curricular program is led by the Digital Media Arts instructor. This service group learns about SCLA's modern broadcast audio visual technologies and volunteers time and talents for theater performances, chapel, concerts and other major events.

MISSION TRIPS

Local, national, and international mission trips are available to all high school students.

NOTES

St. Croix Lutheran Academy
1200 Oakdale Avenue
West St. Paul, MN 55118
www.StCroixLutheran.org

